

Shermco industries

Statement of Qualifications

Rev #190621



One Line. One Company.

“Empowering people to power the world.”



Shermco Canada Sales

info@shermco.com
Box 995, 1033 Kearns Cr.
Regina, SK S4P 3B2
306.949.8131

Shermco U.S. Sales

info@shermco.com
2425 East Pioneer Dr.
Irving, Texas 75061
972.793.5523

888.SHERMCO
7 4 3 7 6 2 6

www.shermco.com



If it's in the electrical power system, Shermco touches it. We are North America's largest and fastest growing NETA-accredited electrical testing organization.

We make sure electrical systems are functioning properly and safely. With our complete service capabilities of Professional Engineering, Rotating Machinery Division, Renewable Energy Services, and Field Repair and local Repair Service Centers, Shermco is in a position to handle all things electrical for virtually every industry sector. All, with an emphasis on safety. That's why we say... if it's in the power system, Shermco does it.



Our Safety Mission

The mission of Shermco Industries is to provide a level of service that exceeds our customer's expectations. We will continue to maintain a healthy work environment and enhance a culture of safe work practices wherein management and employees work together as a team seeking excellence in safety.

Our Corporate Mission

To establish long-term, mutually rewarding relationships with each of our valued customers by consistently providing solutions built on open and honest relationships, while pursuing growth and learning internally to better provide the finest quality of service through the latest technological advances.

Our Vision

Empowering people to power the world.

Our Core Principles

Shermco employees pride themselves on doing the right thing every time, building open, honest, respectful relationships with each employee, providing solutions, embracing and driving change, and maintaining the highest degree of professionalism at all times, all while maintaining a stellar safety culture.

Safety - Ensuring the safety of myself and others. Every task. Every time. Every day.

Innovation - Challenging the status quo, removing barriers that limit our ability to develop bigger, better, and safer processes.

Our People - Caring for the well-being of our people and their future by attracting the best, inspiring them to succeed, providing for their family, and commitment to all. Be the employer of choice.

Integrity - Having the resolve and character to do what is right, not what is easy.

Quality - Committed to exceptional service and superior products through continuous improvement from a world class workforce.

Teamwork - The power of collaboration and working together as one.

Customer Focus - Leading the industry with an extraordinary commitment to unmatched service from our customers.



One Line. One Company.





What makes Shermco successful? The company. The services. The people. The difference.

Since 1974, Shermco has had the ability to stand apart from the rest of the field as the attitude, the quality of services and the wide range of capabilities are unique. As the leading independent electrical testing, maintenance and repair organization, Shermco has established strong relationships across many industries including wind energy, agricultural products, mining, utilities and heavy industry. This allows Shermco, supported by its strong supply chain, to continue to offer the best solutions for safely meeting their customer's needs. Through the established process of on-site analysis, in-house design, application research and accurate execution of work scopes, materials usage and best practices, Shermco finds creative solutions for even the most complicated jobs and projects.

Quick Facts

Shermco

- Established U.S. Operations in 1974
- Established Canadian Operations in 1987
- Privately Held Corporation
- Approximately 1000 Employees
- 1000s Of Successful Projects
- NETA Certified Technicians And Engineers
- Qualified Electrical Workers
- Commercial Vehicle Fleet
- Service Trailer Fleet
- Electrical Engineering Staff

Industry Leader – Shermco Industries is the largest independent electrical testing and maintenance service company in North America, serving energy, industrial and utility customers across the U.S., Canada and other select international markets. Shermco's service capabilities and multiple locations position the company to address the rapidly growing market for electrical services to pipelines and refineries, renewable and traditional energy utilities, metals, mining and other heavy industries, municipal power and water as well as data centers and commercial installations.

Management Strength – Shermco Industries' management team has been developed over the years from our production departments and therefore has a very thorough understanding of our industry's expectations and requirements.

Training and Standards – For decades, many members of management and staff at Shermco have been instrumental in developing electrical safety and technical standards. With this expertise, Shermco has become a leader in both technical and safety training, and has established training capabilities at multiple locations as well as offering educational opportunities at customer's sites.

Financial Strength – Shermco Industries has a strong balance sheet with a robust bonding line and ample back up credit facilities. The combination of our capital strength, diversified business model, and strong risk management practices gives us the solid foundation to fulfill our promises to customers while we actively pursue growth opportunities.

Health and Safety – Shermco's commitment to health and safety shows in our performance. Our EMR, TRIR, and DART performance metrics continue to exceed industry standards, year after year. Our industry-leading performance is driven by Shermco's management team and achieved through the disciplined implementation of a behavior-based health and safety program.



One Line. One Company.



One Line. One Company.

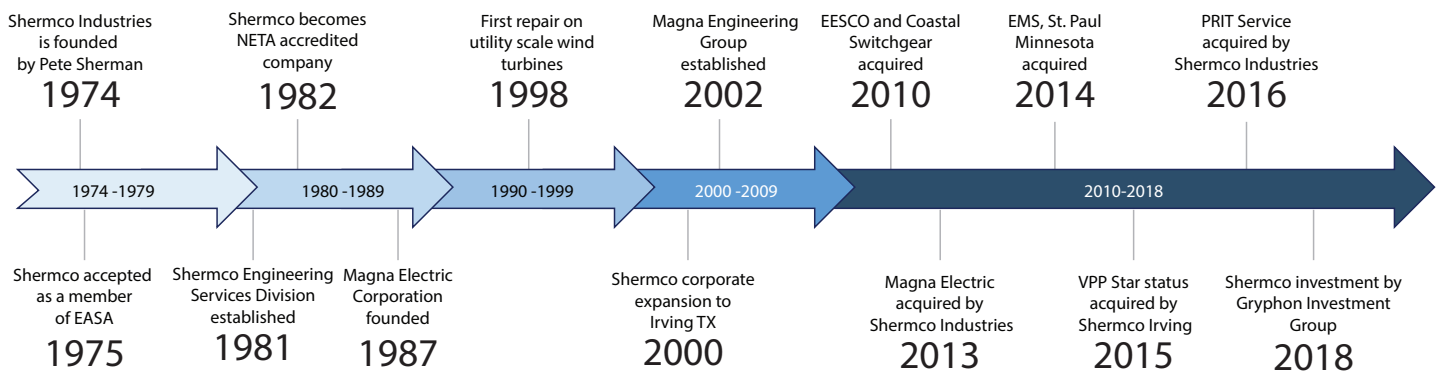
A simple slogan, but a clear indicator of Shermco's strength in utility, industrial and commercial electrical services. If it's on a one-line drawing, we can design it, supply it, install it, test it, commission it, service it, or remanufacture it. From acceptance testing on state-of-the-art electrical systems used in data centers to the design and construction of substations to remanufacturing utility scale wind turbine generators. Our range of services cover the entire spectrum of the electrical industry.

- Acceptance Testing, Commissioning and Systems Start-Up**
- Electrical Power Systems Maintenance and Repair**
- Rotating Machine Maintenance, Repair and Remanufacturing**
- Drive Systems Design, Installation, Maintenance and Repair**
- Windpower Generator Repair and Remanufacturing**
- Circuit Breaker and Switchgear Life Extension Services**
- Substation Design, Upgrades and EPC**
- Reliability Consulting Group**
- Design and Construction for Portable and Mining Substations**
- Professional Services**
- Engineering Studies**
- Systems Design**
- Electrical Safety Training and Audits**
- Industry-Specific Training**
- New Equipment Sales – Components to Complete Systems**

Quality

From our ISO 9001:2008 and EASA accredited rotating machinery center of excellence in Irving, Texas to our extensive Standard Operating Procedures developed for a wide range of field service activities, we take great pride in the quality, accuracy and effectiveness of all our service offerings. The quality assurance staff is well trained and has a strong process development team focused on quality and repeatability as well as the collection and reporting of CTQ statistics. The production quality staff is experienced in Failure Mode and Effect Analysis (FMEA), Root Cause Analysis (RCA), Total Quality Management (TQM) among other quality disciplines – all focused on our customers receiving products or services that exceed their expectations.

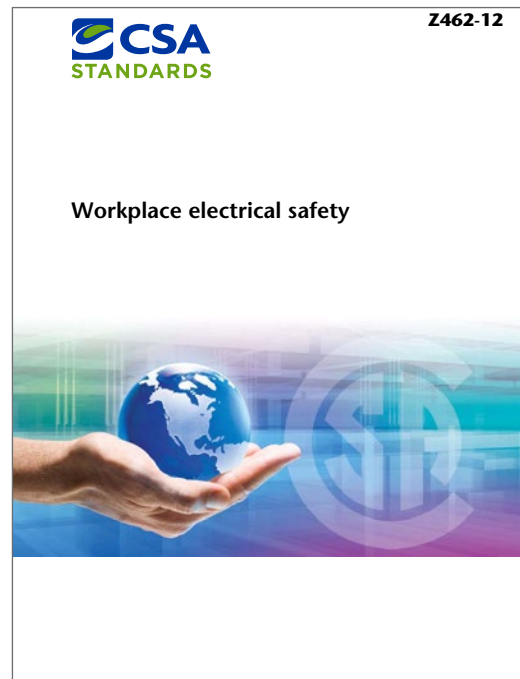
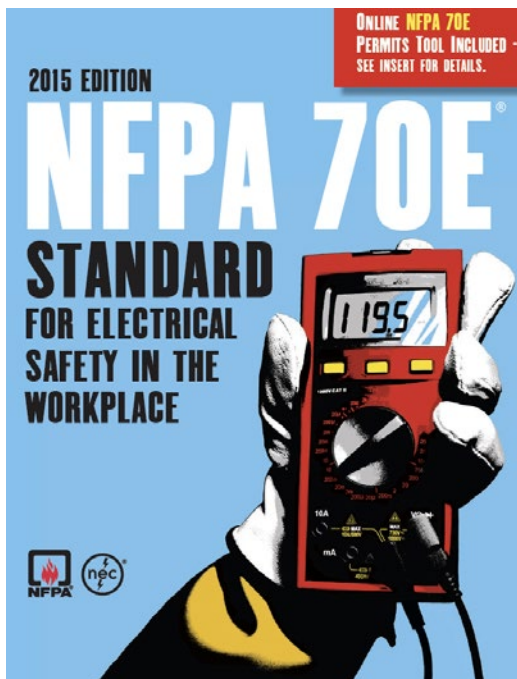
Corporate Timeline



Our first concern. Safety is the first concern for all of Shermco's activities – commercial or personal. Personnel from the company lead the charge for developing and updating national electrical safety standards with appointments on several electrical industry committees.

Commitment. Our entire staff – technicians, engineers, administrators and management – are involved and responsible for the safety of our co-workers, our customers, our contractors as well as our friends and families. It is an integral part of our culture. In fact, safe behavior is at the core of our mission. Whether in one of our manufacturing facilities, at a job site or while driving a truck, we are all responsible for our behavior and attitudes. Our goal is to exceed the minimum requirements and be an industry leader.

Safety Standards. Our service technicians are NETA certified and trained to comply with NFPA 70E and CSA Z462 and other international guidelines. We have a full time safety engineering department at multiple locations to support our commitment as well as many internal safety programs to keep the employees engaged and active participants in our programs.



Shermco Stop Work Policy

Every Employee is Authorized to Stop Work:

Safety begins with us, and each employee has been given the authority, without fear of reprimand or retaliation, to immediately STOP any work activity that presents a danger to any of our people or the public; we will be involved in job hazard analysis and will question and correct any situation that is not in compliance with our safety and health policies; We will report any unsafe acts or conditions to supervisors and will question any work activity that involves violation of the established safety and health policies or the established job hazard analysis.



National Safety Initiatives

Thanks to exemplary employee efforts and a strong management commitment, these are milestone achievements in the prevention and control of occupational safety and health hazards. These programs will also ensure the continued development, implementation and continuous improvement of our safety and health management systems – a huge benefit to our employees and clients.



OSHA VPP Star Worksite

Shermco has achieved OSHA's Voluntary Protection Program Star status at its Irving, Texas facility. This safety culture extends beyond just this facility as the procedures, training and attitude of safe behavior affects all of our off-site technicians as well.

Certificate of Recognition

Our Canadian team has achieved the Certificate of Recognition from the Canadian Federation of Construction Safety Associations. It is an occupational health and safety accreditation that verifies a fully implemented safety & health program and is recognized by participating provincial jurisdictions.



One Line. One Company.

Sometimes, you are known by the company you keep – Shermco’s continued success relies in large part on the continued success and growth of the organizations and affiliations it supports. From industry trade associations to leadership in non-profit organizations, Shermco is active in leadership with almost every industry we serve. A safer, well-educated customer is always a better customer and we make every effort to make sure that we act as responsible consultants to both our customers and our competitors.

Our management is actively involved in dozens of organizations. Here are just a few:



Environmental commitment – We know that today’s operations will affect tomorrow’s environment. Shermco has always worked to protect and enhance the economic and environmental quality of life for our customers and our employees, and we are committed to full compliance with all laws and regulations of local, state and federal governments that affect our operations. We are also involved at the local level, supporting efforts to improve our communities, such as participation in our local Chamber of Commerce Green Business Council. Shermco is fully dedicated to meeting its customers’ energy needs in a manner consistent with a clean environment. In keeping with this belief, it is our policy to conduct our business in an environmentally responsible manner that protects the public, our employees, and the earth that we all share.



Another key differentiator at Shermco is re-investing in equipment, technology and our team. With millions of dollars invested in test equipment, we are ready anywhere, anytime to react quickly to customer's needs. We have also invested in strategic and innovative products and solutions to allow for more flexibility in how we can keep your production time up and your down time minimized.

Mobile Solutions



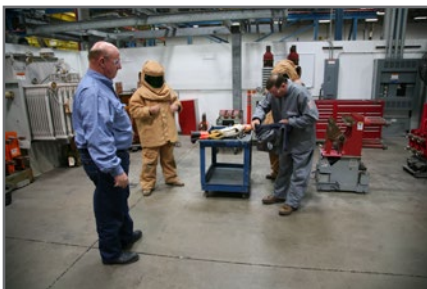
Transformer Oil Processing Units – To operate reliably and safely, transformer insulating oils must be maintained to preserve their original operating characteristics. In addition to Shermco's extensive laboratory services, we have several transformer oil processing trailers that can be dispatched to your location to filter, dehydrate and de-gas your oil, often avoiding costly replacement and extending the service life of your transformers.



SF₆ Insulating Gas Processing – Sulfur hexafluoride gas or SF₆ is used as an electrical insulation medium in many devices. Like oil-insulated equipment, the quality of the SF₆ directly impacts the reliability and safety of the equipment. Shermco has mobile equipment that can reclaim and recycle your SF₆ gas and return your equipment to service quickly and safely.



Mobile Circuit Breaker Repair Facility – For rapid turnaround and overhaul or remanufactured circuit breakers and switchgear during facility shutdowns, natural disasters or major upgrade projects, Shermco has designed and built a self-contained mobile remanufacturing facility so the work can be brought to wherever it is needed. No shipping costs, no lengthy downtimes and less dependence on rental or loaner components.



Mobile Training Center – Based in our Regina, Saskatchewan office, our mobile training center can provide on-site, hands-on-training for electrical maintenance and safety. Fully-qualified and experienced instructors along with our tested and proven curriculum provide the solutions you need to provide your electrical worker the skills and safety education they need.

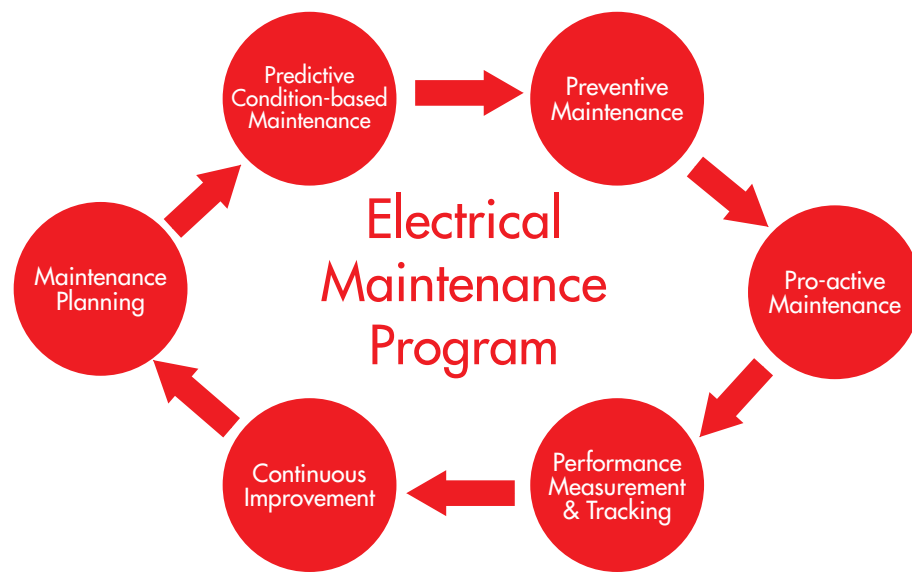
ShermcoYou! And the Shermco Learning Management System

Our most important asset – our employees! Shermco invests in its employees. In 2012, we established a stand-alone internal training and workforce development program we call ShermcoYou! For both safety and technical training. Through classroom lectures, hands-on training and on-line video training, we are raising the bar for technical excellence for both new and experienced employees. From circuit breaker testing to consultative customer management, we can help all of our employees improve and succeed at their jobs and help the customer succeed at theirs!

NETA Testing and Maintenance

At Shermco, we are dedicated to making sure our customers are on-line and running when they need to be. Our large staff of NETA certified technicians and engineers are experts in testing, analysis and maintenance of your electrical power system. We can also help you develop your electrical system maintenance program and aid in determining what to test and how often. And our protection and control engineers and technicians are some of the best in the industry to assure regulatory agency reliability and compliance.

For new construction, acceptance testing and commissioning of the electrical system, whether it's a wind farm, a data center or an industrial facility, Shermco has the experienced staff to manage the project completely and accurately, getting things up and running the right way the first time.



Testing Expertise

Our Expertise includes:

- Automatic Transfer Switches
- Batteries, Sealed and Vented
- Bus Bars
- Cables
- Capacitors
- Circuit Breakers, Air/Vacuum/Oil/SF₆
- Circuit Breakers, Low and Medium Voltage
- Emergency Generation Systems
- Ground Fault Systems
- Grounding System
- Motor Control Centers
- Protective Relays
- Starters and Contactors
- Lightning Arresters
- Switches, Air/Vacuum
- Switchgear
- Transformers, Oil-Filled/Dry Type
- UPS Systems

Electrical Reliability Program Development
Utilizing Industry Standards:

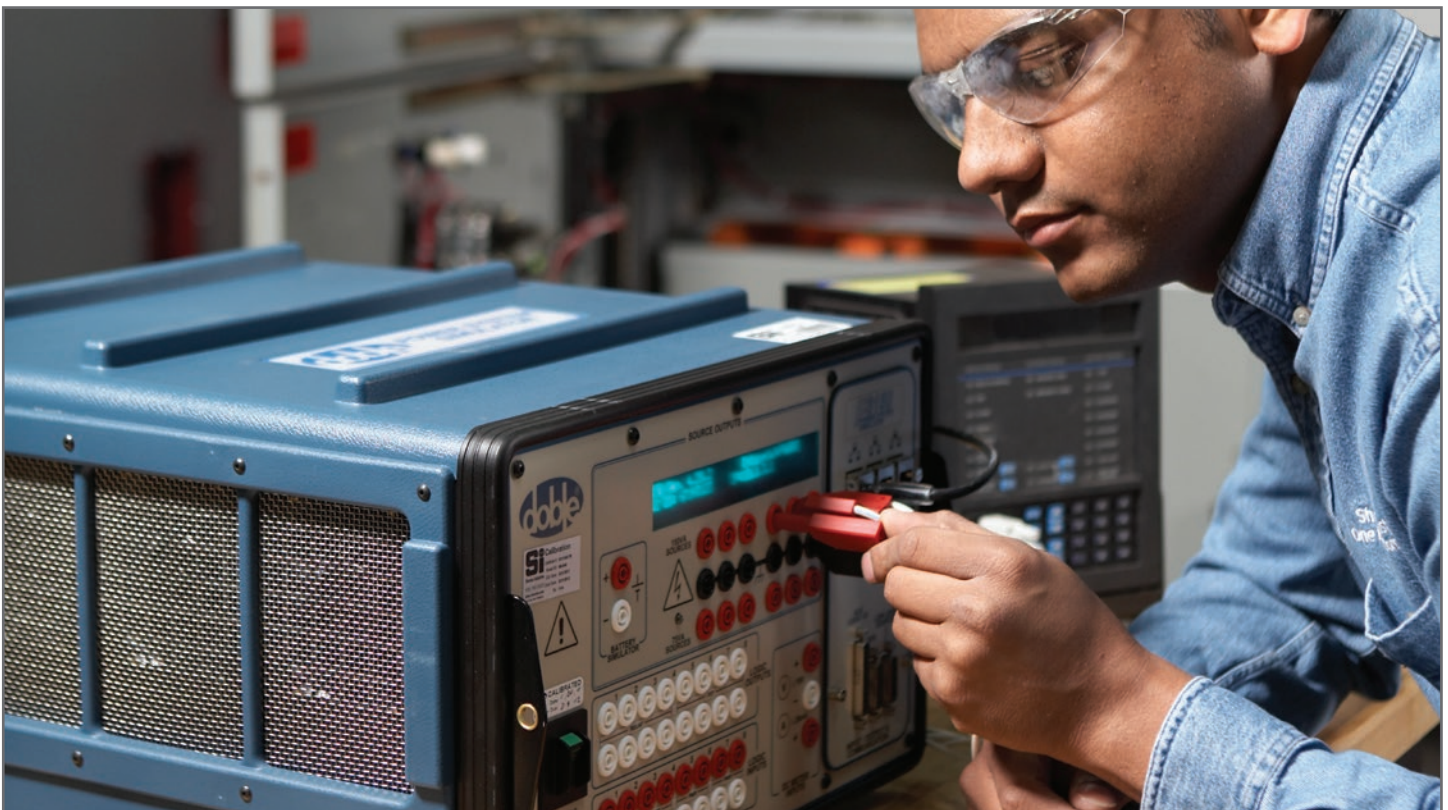
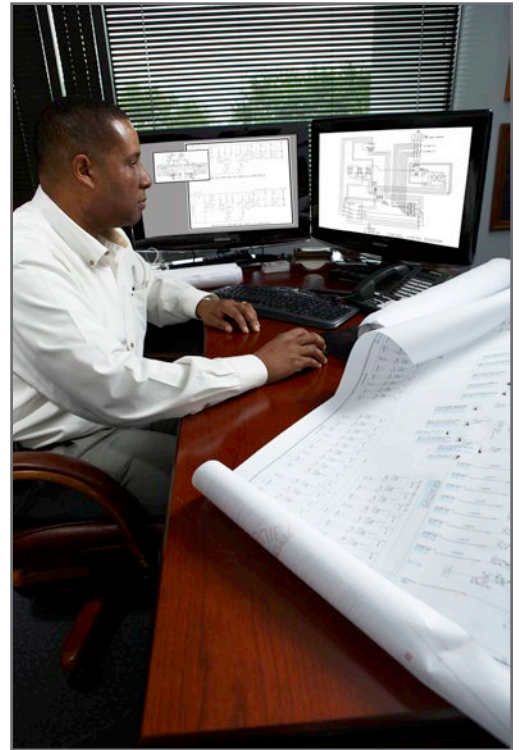
IEEE 1415
IEEE 493
NFPA 70B
CSA Z 463
NETA MTS

Professional Services

With professional engineers registered in virtually every state and province, Shermco can solve your most difficult electrical engineering challenges anywhere in the world. Our large support staff of mechanical and electrical engineers, draftsmen and technical writers assure rapid response times and clear reports and documentation.

Professional services include:

- EPC and turnkey design services
- Power system and quality studies
- Substation design (mobile/permanent)
- 2D and 3D modeling (standard and custom)
- Power distribution center design
- Protection and control upgrades
- Coordination, short circuit, load flow and arc flash hazard analysis
- Automation and HMI design and programming
- Drafting / CAD drawings
- One-line and three-line updates
- NERC/FERC compliance planning
- Power factor/power quality studies
- Feasibility studies
- SCADA systems development
- Control systems design and programming
- Automation and metering design and programming
- General electrical consulting



One Line. One Company.

Rotating Machinery Services

Shermco Industries started life as a repair and remanufacturing workshop for rotating electrical machines – and that service is still at the core of the enterprise. Based in Irving, Texas, where our ISO 9001:2015 remanufacturing center of excellence is located, our Machine Services Division has grown to be one of the largest in the Southwest USA and is an industry leader in the wind energy market segment. Having partnership agreements with most major motor and generator manufacturers, we have the factory training and engineering support needed for machines across all industry sectors. Shermco offers field services on rotating machines throughout our coverage area and beyond, servicing and repairing equipment from marine applications to steel production to pipeline pumping stations. We provide experts in online and offline electrical testing, machine laser alignment, vibration analysis and electrical drive services. With a sales office in Brussels, we also have close relationships with most major European-based equipment manufacturers and offer warranty and aftermarket services for IEC design and other application-specific motors.

Rotating machine services include:

- EASA accredited AC machinery repair
- 110,000 SF service facility in Irving, Texas
- Additional services in Saint Paul, Minnesota
- AC motors to 15 kV
- DC motors and generators
- AC generators to 12 MW
- Utility scale wind turbine generator specialists
- ISO 9001:2015
- UL certified repairs
- Schaeffler Certified
- Air turbine and blower service and remanufacture
- PEV efficiency certification through Advanced Energy
- API compatible insulation system
- International field services
- Authorized factory services for multiple OEMs



One Line. One Company.

Circuit Breaker Services

The heart of any electrical system – Some of the most critical components of an electrical system are the circuit breakers that provide both equipment protection and personnel safety. Even when respectable testing and maintenance protocols are in place, often times they need more intensive service at key intervals to ensure continued safe and reliable operation. Shermco has established circuit breaker and switchgear repair and remanufacturing centers in multiple locations, including mobile service capabilities that can repair and remanufacture right at the customer's location. We also upgrade older circuit breakers to comply with modern specifications and can help with emergency or shutdown planning by supplying loan, lease or exchange options for most popular industrial breakers.

Circuit breaker services include:

- Remanufacturing for life extension
- Reconditioning
- Routine and 24/7 emergency repairs
- Solid-state trip device retrofits
- Acceptance / maintenance testing
- Primary / secondary current-injection testing
- Contact replacement / resurfacing
- In-shop and on-site services
- New and obsolete parts replacement
- Custom conversions for special applications
- Customer-specific exchange program
- PEARL certified



Oil Testing Laboratory

Avoiding downtime – Shermco can help you avoid costly loss of production and equipment failures while extending the reliability of electrical transformers, tap changers, circuit breakers, rectifiers and other oil-filled electrical assets.

With extensive oil testing laboratory services, Shermco can provide a timely turnaround and accurate testing of mineral, silicone, FR3 and other insulating oils. Each summary report includes test values, trends over time, and recommended repair and remedial actions. These quality services are available 24/7 on an emergency basis and include recommendations from our in-house oil analysts, who offer many years of experience in transformer oil analysis, testing and chemistry.

Typical Oil Test Protocols

Analysis includes:

- Color/Visual Exam
- Moisture
- Particle Count
- Acidity
- Power Factor
- Specific Gravity
- Viscosity
- Dielectric Breakdown
- Interfacial Tension (IFT)
- Dissolved Gas Analysis (DGA)
- Wear Metals



New Equipment

Shermco manufactures or distributes many types of new electrical equipment from motors and generators manufactured by global technology leaders, to portable substations and electric service buildings designed and built right in our own facilities.

New equipment products and services include:

- In-house engineering allows for quick response times in the drawing approval phase
- Start-up assistance and after sales support are available
- Industrial and electrical engineering capabilities
- 2D and 3D modeling of standard and custom products
- Electrical services buildings
- Panel fabrication
- Electrical distribution skids
- Junction boxes
- Portable substations
- Customized drive systems
- Custom and stock motors, generators, and controls



Supplier partnerships include:

ABB TOSHIBA

TECO   **Westinghouse** **TMEiC**

 **LERROY
SOMER**

 **WEG**

 **SEL**

Available in selected locations

One Line. One Company.

Training

Advancing safety and technology – Shermco supports and encourages employee participation in industry associations and working groups to help develop technical and safety standards and recommended practices. Because of our wide range of experiences and these consultative ties with CSA, IEEE, NFPA, NETA, EASA, AWEA and other organizations, we have developed training programs to support our employees, customers and competitors, especially in the area of electrical safety. These training classes are offered at most of our locations as well as at remote centers and at our customer's sites by our full-time dedicated training staff, often supplemented by other experienced industry leaders within Shermco. Customized topic specific training is also available and continuing education units (CEU) are available through Louisiana Tech University.

Technical training

- Electric motor maintenance and testing
- Circuit breaker maintenance
- Basic electricity
- Troubleshooting and electrical print reading
- Power generation basics
- Substation maintenance
- Splicing and termination of medium-voltage cables
- Protective relay maintenance and calibration
- Maintenance of Electrical Systems (CSA Z463)

Safety training

- Electrical Safety for Qualified Electrical Workers (ESQEW), non-QEW and Managers
- Electric safety refresher
- Systems operations and safety for Wind Generation Sites
- Understanding and implementing NFPA 70E

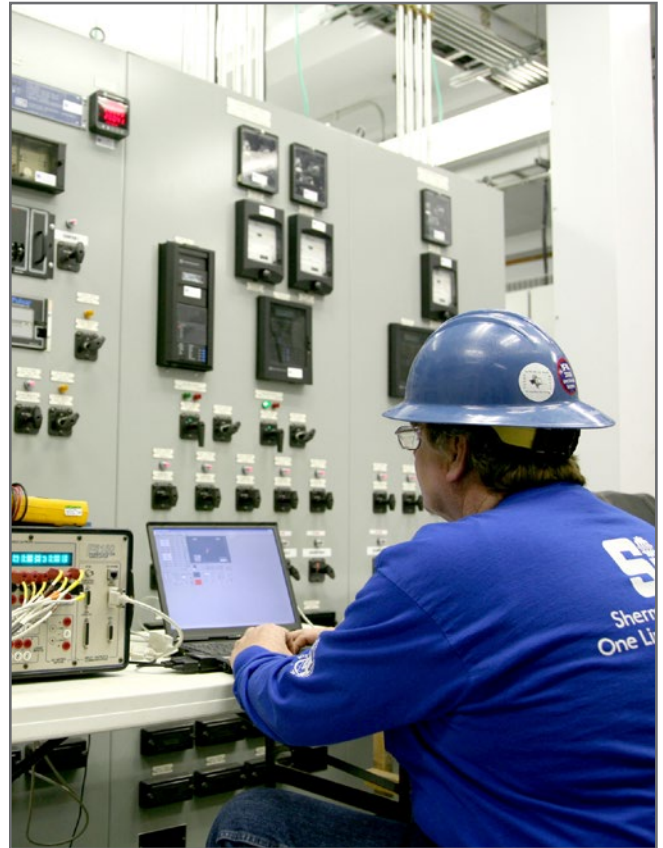


One Line. One Company.

Utilities

Energy is what drives the economy and Shermco makes sure you can provide the power to run. Our experienced engineers and technicians have been working on electrical systems and electrical machinery for over 40 years and know what needs to be done to keep the lights on. We offer a wide array of services for a generation facility's motors, switchgear and power transformers. And, we are experts in NERC/FERC reliability planning and compliance. Shermco can also help with your transmission and distribution needs including substation design and upgrades and we have some of the best protection and control technicians in the business.

- Electrical system testing and maintenance
- Motor and generator field services
- Conveyor motor and drive services
- Large AC/DC motor repair and remanufacture
- NERC/FERC compliance
- Electrical safety training
- Protection and control design, upgrade and testing
- Transformer maintenance
- Transformer oil and SF₆ processing equipment
- Oil test lab
- CAN/ULC S801 Training



Municipal Services

We all need dependable public services and Shermco has over 40 years of experience keeping cities, towns and villages supplied with clean water, electricity and other municipal services. We understand water treatment facilities and have serviced both the power systems, motors and pumps for decades. For municipal power systems, we have performed everything from design to installation to maintenance of their power generation equipment, including diesel, biomass and utility-scale wind turbines. We are well experienced in NERC/FERC compliance testing and planning, substation maintenance and SCADA/controls upgrades to support small utilities. We understand the importance of serving your citizens and local industries and can respond quickly and effectively to keep everyone happy.

- Process and controls engineering support
- Motor, pump and control systems repair and upgrades
- Power system testing and upgrades
- Power generation planning, engineering, procurement and construction
- NERC/FERC compliance planning and testing
- Substation and generation facility testing and maintenance



Wind Generation

Since 1998, Shermco has been helping utility scale wind farms keep the power flowing whenever the wind is blowing. With a dedicated wind turbine service team we can repair or remanufacture any brand of generator used in wind applications up to 3 MW and have many styles of generators in our growing unit exchange program. We also offer extensive field service support including troubleshooting and fault analysis, uptower repairs, and the removal and replacement of generators, gearboxes and rotor systems. Wind farms are power plants and we offer expert support for the high voltage balance-of-plant system including acceptance testing, required service outages and power factor correction upgrades. We have also constructed several large wind turbines for municipal and industrial customers, so we understand better than most the ups and downs of a wind farm.

- Uptower generator repair
- Alignment and vibration testing
- Online and offline electrical testing
- Fiber optics installation and repair
- Brush life extension projects
- Transformer oil sample testing and support
- Collection system testing, repair and upgrades
- Substation testing and maintenance
- Generator repair and remanufacture



One Line. One Company.

Petrochemical

From drilling rigs to pipelines to refineries, Shermco has the experience and the manpower to provide the level of service you require to maintain safety and reliability for today's energy market. The gas and petroleum industry is really booming and delivering product as promised is critical. Shermco can help assure that your production and midstream operations are supplying what is needed and the refinery's electrical systems and prime movers are operating.

- Substation testing and maintenance
- Distribution system testing and upgrades
- Circuit breaker testing, overhaul and remanufacturing
- Cable testing services
- Electric motor predictive testing
- Rotating apparatus vibration analysis and repair
- Lubricant testing lab
- Motor drives and controls design, installation and repair
- Electrical professional studies – arc flash and coordination
- Shutdown, turnaround, and outage services
- 24-hour emergency services



One Line. One Company.

Heavy Industry and Mining

Shermco started out serving steel, cement, paper and other heavy industrial users of motors and generators and we still count those industries as a large part of our core market. From substations to the factory line, Shermco designs, tests, repairs, remanufactures, installs and provides training for everything electrical in the plant.

Our dedicated field service technicians and engineers provide the core services for this industry. They offer electrical and mechanical testing and repair of rotating machinery and the complete electric power system. We also offer expert assistance with maintenance planning for safety and reliability. Our professional services group provides electrical engineering support including arc flash and coordination studies, one-line drawings and other technical drafting, SCADA systems development and a host of other services.



Mining and Heavy Industry

Our services include:

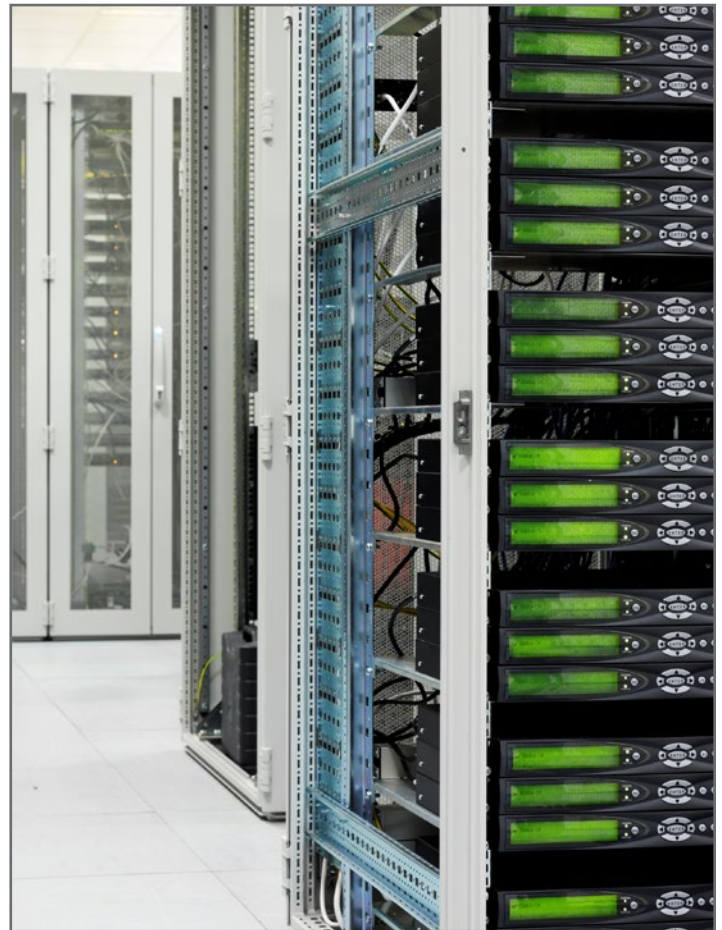
- Circuit Breaker and Switchgear Testing and Maintenance
- Cable Testing
- Motor and Generator Services Up to 15kV
- Drive Systems Design and Repair
- Professional Engineering Services
- Power Systems Design, and Upgrade
- Transformer Maintenance
- In-house Oil Testing Lab
- Design and Installation of On-site Electrical Generation – Bio, Gas, Wind, Solar
- Electrical Safety Surveys, Training and Plan Development
- Custom Manufacturing



Data Centers

With the “cloud” becoming the most popular way to store and retrieve electronic information, data centers for processing and storing that data are being built at an amazing rate. The reliability of these large centers are one of their most important design attributes and Shermco is ready to help make sure they stay on line.

- Acceptance testing of electrical systems
- Backup generator testing and control upgrades
- NETA testing for equipment reliability
- Project management
- Electrical reliability program development
- Professional services for expansion projects
- Substation and transformer testing and reliability support
- Commissioning services for all aspects of the electrical system.



One Line. One Company.

Commercial Services

Large building complexes, electronic manufacturers, hospitals and other commercial facilities rely on Shermco for acceptance testing during construction, maintenance planning and testing, power quality monitoring and systems testing required to assure reliable operations. Maintenance and upgrades on back-up power generation at health facilities is a strong area of expertise as are the emerging technologies that allow for wireless remote metering and power quality monitoring. Our professional staff of over 100 electrical engineers can solve any of your power system issues and provide design upgrades and solutions for expansion or modernization projects. We know what to do and are available 24 hours every day.

- Emergency power systems design and upgrades
- Acceptance testing and maintenance planning
- Remote metering for sub-clients or cost centers
- Power quality studies and corrective actions
- Coordination studies and drawings
- Electrical buildings for remote locations



One Line. One Company.



Shutdowns, Turnarounds and Outages

Shermco specializes in supplying the safe, certified and expert technicians, engineers and project managers you need for efficient and productive periodic maintenance. From the planning and pretesting phases through commissioning and startup, we have the right personnel, and enough of them, to assure that your electrical system equipment and machinery is ready to go when you are. With over 250 certified NETA technicians along with a flexible supporting staff, there is no project too big for us to manage.

- >300 NETA certified technicians and field engineers
- Certified project managers
- Pre-test planning and equipment scans
- Onsite circuit breaker and switchgear remanufacturing
- Rotating machinery specialists
- Engineering drawing development and updates
- Backup power generation and portable substations



One Line. One Company.

Disaster Recovery

You never know when it is going to happen. Hurricanes, storms, flooding. Electricity and water don't mix, but when they do, it is a mess. Shermco has the experience and expertise to help in advanced planning for disasters, and to get your electrical system and motors back on line as soon as possible after the danger passes. We have the infrastructure in place to manage very large projects and the experienced management to understand what needs to be done first. You can't always know when the unexpected is going to happen, but you can be ready when it does.

- Pre-disaster planning and inventory assessment
- One-line maintenance and component identification
- Emergency power and support services
- On-site circuit breaker repair and remanufacturing
- Trained and experienced disaster recovery planning team
- Safety engineering support
- Cable cleaning and drying processes
- Transformer repair and testing
- Professional project management support



One Line. One Company.



Shermco Locations



Our Offices

With 29 locations and more to come, we are where our customer's need us and we are well staffed to meet even the most demanding challenges for both major projects and daily local service activities. Located throughout North America – from Houston to Edmonton – we offer support to our customers globally, working in over 50 countries on six continents and traveling to even more locations every year.

Angleton

33002 FM 2004
Angleton, TX 77515
Phone: 979.848.1406

Austin

1705 Hur Industrial Blvd.
Cedar Park, TX 78613
Phone: 512.267.4800

Baton Rouge

1720 S. Sonny Ave.
Gonzales, Louisiana 70737
Phone: 225.647.9301

Calgary

7015 8th Street NE
Calgary, AB T2E 8A2
Phone: 403.769.9300

Cedar Rapids

1711 Hawkeye Dr.
Hiawatha, IA 52233
Phone: 319.377.3377

Charlotte

501 Union West Blvd. Matthews,
North Carolina 28104 Phone:
469.586.7532

Chicago

112 Industrial Pkwy
Minooka, IL 60447
Phone: 815.467.5577

Columbus

417 Commerce Street
Tallmadge, Ohio 44278 Phone:
614.836.8556

Dallas Field Services

510 N Wildwood Dr.
Irving, TX 75061
Phone: 972.793.5523

Dallas HQ - Corporate Off ce

2425 East Pioneer Dr.
Irving, TX 75061
Phone: 972.793.5523

Des Moines

5145 NW Beaver Dr.
Johnston, Iowa 50131
Phone: 515.265.3377

Detroit

12796 Currie Court
Livonia, MI 48150
Phone: 734.469.4050

Edmonton

3731 98th Street,
Edmonton, AB, T6E 5N2
Phone: 780.436.8831

Houston

3807 S. Sam Houston Pkwy West
Houston, TX 77053
Phone: 281.835.3633

Minneapolis/St. Paul

998 E. Berwood Ave.
St. Paul, MN 55110
Phone: 651.484.5533

Midland

11800 Jordy Rd.
Midland, TX 79707
Phone: 940.322.2206

Midwest City

2820 Global Pkwy.
Midwest City, OK 73110
Phone: 405.733.5551

Mobile

5805 Hwy 43
Satsuma, AL 36572
Phone: 251.679.3224

Nashville

5211 Linbar Drive, Suite 507
Nashville, TN 37211
Phone: 615.454.5985

Omaha

4670 G Street
Omaha, NE 68117
Phone: 402.933.8988



Phoenix

2231 East Jones Ave., Suite A
Phoenix, AZ 85040
Phone: 602.438.7500

Regina

1033 Kearns Crescent
RM of Sherwood, SK, S4K 0A2
Phone: 306.949.8131

San Antonio

12000 Network Blvd.
Building D, Suite 410
San Antonio, TX 78249
Phone: 210.877.9090

San Antonio

4706 College Park
San Antonio, TX 78249
Phone: 940.322.2606

Saskatoon

233 Faithfull Crescent
Saskatoon, SK, S7K 8H7
Phone: 306.955.8131

Sweetwater

1301 Hailey St.
Sweetwater, TX 79556
Phone: 325.236.9900

Tulsa

4510 South 86th East Avenue
Tulsa, OK 74145
Phone: 918.234.2300

Vancouver

1375 Church Avenue
Winnipeg, MB, R2X 2T7
Phone: 204.925.4022

Winnipeg

#307-2999 Underhill Ave.
Burnaby, BC V5A 3C2 Phone:
604.343.5883

Wichita Falls

1411 Twin Oaks St.
Wichita Falls, TX 76302
Phone: 940.322.1719



888.SHERMCO
www.shermco.com